



# Vav2 (phospho Tyr142) Polyclonal Antibody

<b>Catalog No</b>	YP-Ab-16118
<b>Isotype</b>	IgG
<b>Reactivity</b>	Human;Mouse
<b>Applications</b>	WB;IHC;IF;ELISA
<b>Gene Name</b>	VAV2
<b>Protein Name</b>	Guanine nucleotide exchange factor VAV2
<b>Immunogen</b>	The antiserum was produced against synthesized peptide derived from human VAV2 around the phosphorylation site of Tyr142. AA range:108-157
<b>Specificity</b>	Phospho-Vav2 (Y142) Polyclonal Antibody detects endogenous levels of Vav2 protein only when phosphorylated at Y142.
<b>Formulation</b>	Liquid in PBS containing 50% glycerol, 0.5% BSA and 0.02% sodium azide.
<b>Source</b>	Polyclonal, Rabbit,IgG
<b>Purification</b>	The antibody was affinity-purified from rabbit antiserum by affinity-chromatography using epitope-specific immunogen.
<b>Dilution</b>	Western Blot: 1/500 - 1/2000. Immunohistochemistry: 1/100 - 1/300. Immunofluorescence: 1/200 - 1/1000. ELISA: 1/10000. Not yet tested in other applications.
<b>Concentration</b>	1 mg/ml
<b>Purity</b>	≥90%
<b>Storage Stability</b>	-20°C/1 year
<b>Synonyms</b>	VAV2; Guanine nucleotide exchange factor VAV2; VAV-2
<b>Observed Band</b>	101kD
<b>Cell Pathway</b>	cytosol,plasma membrane,
<b>Tissue Specificity</b>	Widely expressed.
<b>Function</b>	function:Guanine nucleotide exchange factor for the Rho family of Ras-related GTPases.,similarity:Contains 1 CH (calponin-homology) domain.,similarity:Contains 1 DH (DBL-homology) domain.,similarity:Contains 1 PH domain.,similarity:Contains 1 phorbol-ester/DAG-type zinc finger.,similarity:Contains 1 SH2 domain.,similarity:Contains 2 SH3 domains.,tissue specificity:Widely expressed.,
<b>Background</b>	VAV2 is the second member of the VAV guanine nucleotide exchange factor family of oncogenes. Unlike VAV1, which is expressed exclusively in hematopoietic cells, VAV2 transcripts were found in most tissues. Alternatively spliced transcript variants encoding different isoforms have been found for this gene. [provided by RefSeq, Aug 2008],



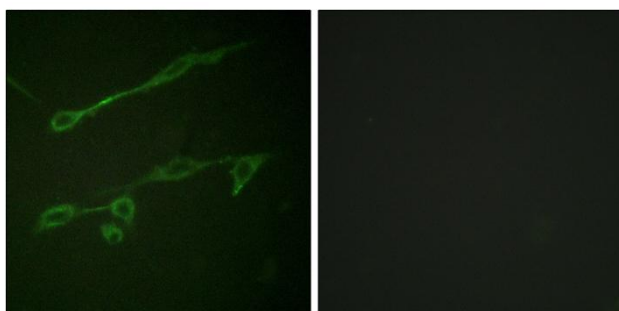
**matters needing attention**

Avoid repeated freezing and thawing!

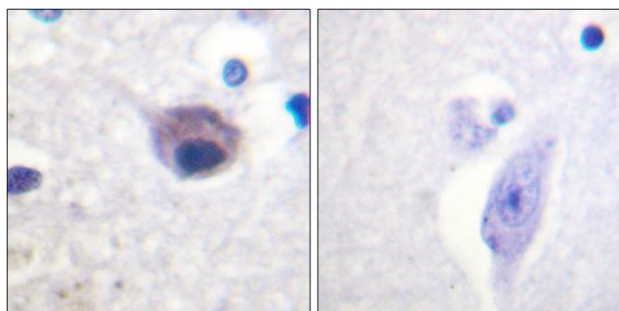
**Usage suggestions**

This product can be used in immunological reaction related experiments. For more information, please consult technical personnel.

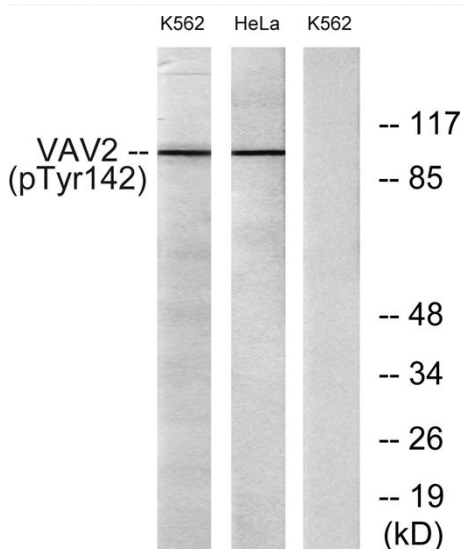
**Products Images**



Immunofluorescence analysis of NIH/3T3 cells, using VAV2 (Phospho-Tyr142) Antibody. The picture on the right is blocked with the phospho peptide.



Immunohistochemistry analysis of paraffin-embedded human brain, using VAV2 (Phospho-Tyr142) Antibody. The picture on the right is blocked with the phospho peptide.



Western blot analysis of lysates from HeLa cells and K562 cells treated with TNF 20ng/ml 30', using VAV2 (Phospho-Tyr142) Antibody. The lane on the right is blocked with the phospho peptide.